

# Hoffen

laboratory furniture company

# Content

---

About Us 03

Our Major clients 04

Our Biggest Projects 05

Certificates 06

Our Products 07

Our clients 59

---



# About Us

Hoffen originated in 1996, leading the Egyptian market as the first specialized laboratory furniture company.

With more than 7 international agencies and several manufacturing facilities in Cairo, Hoffen aims to develop the quality of the labs in the region to the international standard in an economical way.

With our core values of quality, trust and customer centricity, Hoffen was able to lead the Egyptian market and gain trust of the major clients.

Our strategy is that we see ourselves as partners of our customers, our highly experienced team work together focusing on fixing our costumer's critical obstacles to successfully install their Laboratory furniture in compliance with the international standards.

# Our Major clients

---



# Our Biggest Projects

---





# Certificates



**EN 14470-1**



*EN 14175:2012 (Parts 1, 2, 3, 6, 7) – Fume-Hoods*



ISO 6272

ISO 6270-2

ISO 9001:2015

ISO 14001:2015

ISO 45001:2018

# Products

---

Benches	08
---------	----

Safety cabinets	30
-----------------	----

Fume -Hood	35
------------	----

Laminar Flow	38
--------------	----

Bio Safety Cabinet	40
--------------------	----

Arm Hood	42
----------	----

Accessories	44
-------------	----

---

# Benches

---

Type of Benches

Cabinets

Steel Frame

Worktop

Sinks



# Type of Benches

---



# I. Wall Bench

---



## II. Island Bench

---



# Laboratory Wood Cabinet

---

Laboratory units are made of laminated smooth plywood surface that is resistant to acid, alkalis, absorption of liquid and easy to wash and clean.

The plywood is qualified with high quality which gives the units hardness and high resistance towards the humidity, Liquid or micro-organisms will not seep. No worries of potential inner surface damage.

All the units are coated from inside and outside with a laminated layer and elastic laminated strips.

The hinges are imported from Europe; all the units are supplied with adjustable shelves for field application and Shelf adjustment clip shall be provided.

Drawers and door pull modern designed offering a comfortable hand grip and shall attach to door or drawers with machine screws.

All the drawers are supplied on ball bearings to facilitates moving and prevent the drawers from deviation.

The width of the under bench allow a storage area inside the units.

Wide range of various colors to choose from to apply the color-coding system on the drawers.

# Laboratory Steel Cabinet

---

Laboratory furniture and casework from HOFFEN offers all steel, flush front construction, integral cabinets welded with interchangeable doors and drawers, and so much more.

Hoffen Epoxy resin work surfaces, worktops and laboratory fitments complete the work toppings of the steel casework and offer excellent resistance to most if not all solvents, alkalis and acids used in modern labs. The low sheen, non-glare finish to Hoffen Epoxy black work surfaces is extremely durable and easily maintained when the proper and prescribed maintenance is performed.

Hoffen Steel Casework is available in a virtually limitless array of colors. In addition to the popular standard finishes, we can produce your Steel cabinets in almost any custom color, or in a combination of colors, Minimum order requirements are desired for Special colors.

# Steel Frame (H)

---





# Steel Frame (H)

---

From the finest iron tubes and it is available in H-Shaped frame size 3x3 cm.

The steel frame is joined and sealed vertically with electro self-adhesive bonds and their surface is well polished to smooth it and finish it free from any cracks.

It has a durability of up to 750 Kg.

It is treated with anti-rusting and anti-chemical solutions the procedures involve eight steps according to the German Standard DIN50939 and directly sprayed after dryness within a spraying Cabinet or automatically with 14 guns by Turbo system.

The powder is stabilized on the steel surface by heating the steel till it reaches 200C for 20-15 min.

The vertical columns of the frame are supplied with adjustable system to prevent any lean or tilting in the floor level and to insure complete stableness of the bench on the floor.

The columns and joins are bonded and joined with screws according to the bonding system and this to facilitate fixing, installing, changing the measurements and repairing utilities accordingly.

# Steel Frame (C)

---



# Steel Frame (C)

---

From the finest iron tubes and it is available in a C-Shaped frame size 4x6 cm.

C-Frame is more flexible with a simple and modern structure.

It is treated with anti-rusting and anti-chemical solutions the procedures involve eight steps according to the German Standard DIN50939 and directly sprayed after dryness within a spraying Cabinet or automatically with 14 guns by Turbo system.

The powder is stabilized on the steel surface by heating the steel till it reaches 200C for 20-15 min.

Stainless steel and rubber adjustable feet, its damping-proof, shipper-proof, and corrosive-proof.

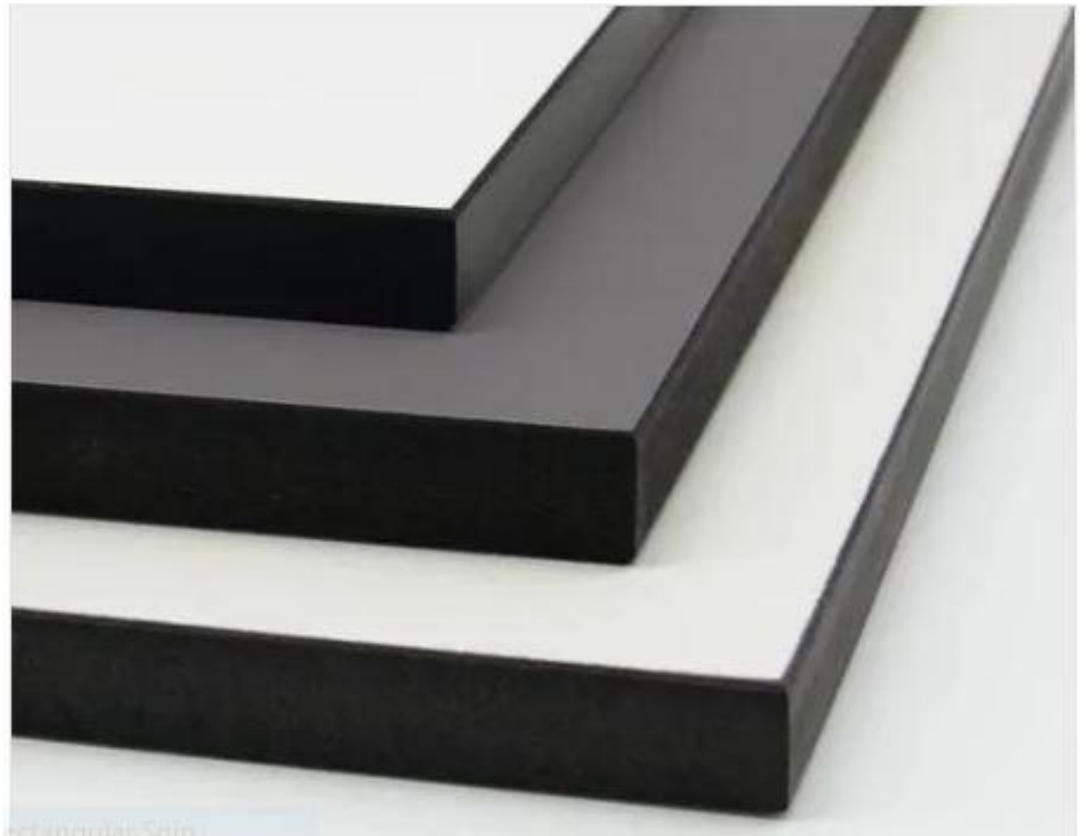
It has a shock-absorbing function.

C-frame can choose a suspended cabinet and push drawer structure.

They are easy to be cleaned, assembled, and dissembled.

# Worktop

---



# Epoxy Worktop

---

U.S Epoxy is a solid cast, monolithic epoxy resin, molded and oven-cured as a solid, uniformly constructed product, with smooth, no specular and non-glaring finish; offering excellent quality laboratory work surfaces and Complimentary sink units.

Produced at the ISO 9000 Certified manufacturing facility at the Dacron, Inc. plant in Taylor, Texas, and private braded by Dacron for Total Lab Solutions under the label U.S Epoxy.

The impressive heat and chemical resistance of solid cast epoxy resin makes Epoxy the most popular choice for the rigors of a laboratory environment.

The outstanding qualities of epoxy resin provide the safest, most economical and long-lasting work surface available.

U.S epoxy laboratory countertops are asbestos free and a LEED qualified material.

U.S Epoxy resin surfaces resist discoloration, blistering, and cracking even under the harshest conditions.

Epoxy resin material is not coated or laminated.



# Epoxy Worktop

---

Compliance requirements are:

- Flexural Strength: Not less than 10,000 psi.
- Modulus of Elasticity: Not less than 2,000,000 psi.
- Tensile strength: ASTM D638 — 4100 psi minimum.
- Hardness: ASTM 785 - Barcol impressor 55 minimum (Rockwell M): Not less than 100.
- Flammability: ASTM E84 class 1/A Flame spread 10 maximum, smokes Developed 25 Maximum.
- Heat Distortion Point: Not less than 260 deg. F
- Thermal expansion: ASTM D 696: 0.000023 in/inj/F Maximum.
- Water absorption (24 Hours): Not more than 0.02 percent Boiling Water resistance: NEMA LD3, No Effect.
- High Temperature resistance: NEMA LD3, No Effect.
- Liquid absorption: ASTM D 570 24 hours — 0.06% Maximum.
- Bacteria Growth: ASTM G22, No Growth Sanitation: National Sanitation Foundation (NSF) Standard 51 rating.



# Compact Max Resistance

---

The worktop is a self-supporting flat panel with an integrated, decorative urethane-acrylic surface and a cellulose fiber reinforced phenolic resin core.

A unique patented Electron Beam Curing (EBC) process ensures that each panel is non-porous and resistant to a large number of aggressive chemicals.

The closed surface of Trespass practically withstands dirt accumulation, keeping it smooth and easy to clean.

Its thickness not less than 19mm, it provided with back splash and accompanied with a marine edge to prevent spoil of liquid.

Trespass is the perfect surface for quality worktops that do not support bacterial growth and are highly resistant to a wide variety of aggressive chemicals.

Trespass panels meet the requirements of most laboratories while at the same time bringing a range of additional benefits.

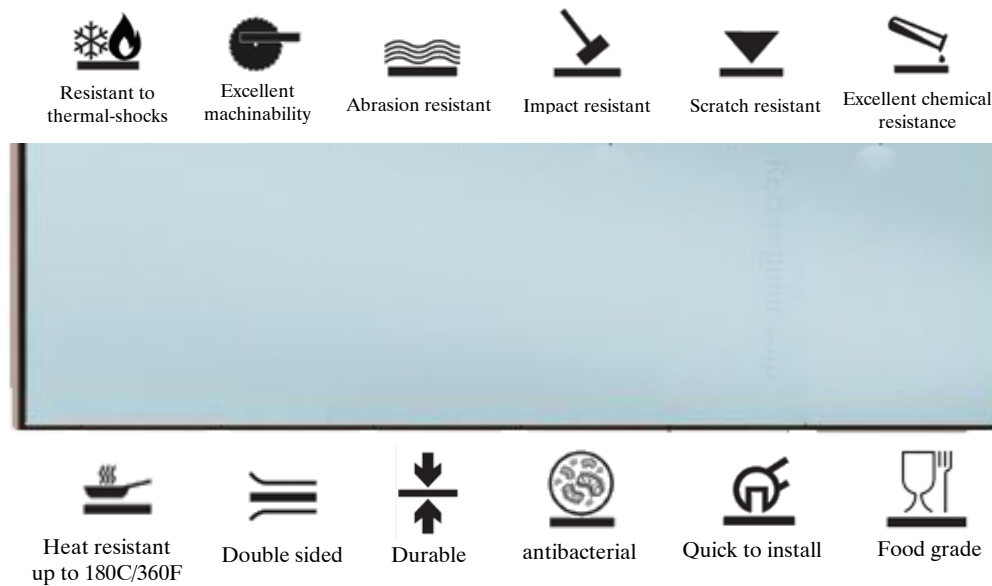
These include chemical, wear and water resistance.

Available in two colors (Black and white).



# Compact Max Resistance

Because of its non-porous finish, Max Resistance can be easily disinfected and doesn't support the growth of bacteria. As a result, you can confidently disinfect, knowing that you will kill > 99.99% of germs.



In a further test, it was demonstrated that the surface of Max Resistance is free of micropores. The comparison to other available surfaces shows that this is a truly unique feature.

RE-Surface



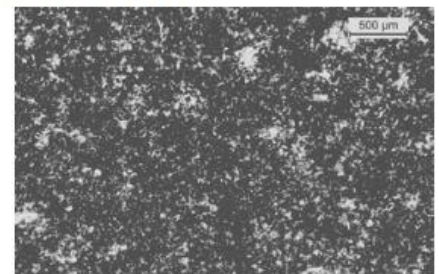
NO SMALL PORES VISIBLE

EBC-Surface



MICROPORES VISIBLE

Melamine Surface



PORES VISIBLE

# Granite Worktop

---

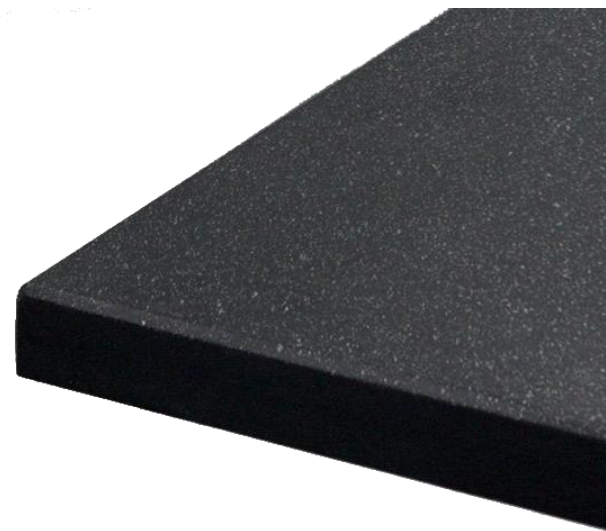
The work top made of imported granite double black sheets with thickness 2 cm.

It is Chemical and Acid resistant.

It is anti-scratch.

It is homogeneous and easy to wash and clean.

It provided with back splash (7 cm high) from the same material of worktop and accompanied with a marine edge to prevent spoil of liquid.



# Epoxy Sinks

---



# Epoxy Sinks

---

The epoxy sinks are made from Epoxy resin that is chemical resistant.

They are integrally molded from filled thermosetting cast epoxy resin and oven cured. They are available in black color size: (400x400mm) for wall benches & (400x600mm) for island benches.

Fittings and accessories are molded from pure, high-grade polyolefin/copolymer material.

The extreme environments of today's industrial laboratories and research center that requires highly grade chemical resistant materials as one-piece unit for maximum effectiveness.

Sinks and accessories are engineered in America for the international and domestic markets.

All sinks shall be equipped with siphon-cup type drain outlet to prevent the entry of solids into drain lines.

The siphon material shall be chemically resistant and withstands temperature and boiling water.

All drain lines and fittings shall be made of chemically resistant PVC and suitable diameter for laboratory purposes.

# Polypropylene Sinks

---





# Polypropylene Sinks

---

Corrosion-resistant waste sinks, fittings and accessories are injection molded from pure, high-grade polyolefin/ co-polymer materials.

The extreme environments of today's industrial laboratories, research, centers, schools, and universities require highly chemical-resistant materials as a one-piece unit for maximum effectiveness.

All components of these ultra-light poly materials are easy to clean and maintain by virtue of their self-draining sloped base.

When compared to other cast industry sinks, EVEN-FLOW poly sinks ease the task and expense of installation and with the molded sink waste supplied separately, reduce shipping costs and breakage.

All EVEN-FLOW poly sinks may be installed as Lipped Drop-In or Undercounted-Mount.

Supplied in black PP colors, EVEN-FLOW sinks & Waste System Accessories are made in Malaysia and engineered in USA for the international markets.

# Cup Sinks

---



# Cup Sinks

---

Molded from pure, high-grade chemical resistant polypropylene materials, fittings and accessories are available in black PP color.

The following industry standard components are compatible with Epoxy Counter Tops and sink products.

Size: - (19 x 11 cm) Depth (10 cm).



# Safety Cabinets

---

Storage cabinets

Anti-Acid Cabinets

Flammable Cabinets

# Storage Cabinets

---

The cupboard is made entirely of double-sided Formica-coated countertops or epoxy coated galvanized steel.

It contains two windows of glass and (3) internal shelves.

Dimensions: 90 cm length x 50 cm width x 200 cm height.

All accessories used are made of stainless steel.



# Anti-Acid Cabinets

---

Cabinet Made entirely of Epoxy Coated Powder steel high chemical and acid resistance insulating rubber feet allowing height adjustments.

The safety cabinet is constructed by double-wall steel sheet through with (38-mm) of insulating air space for fire resistance.

- 0 Fire Rating (Inflammable).

- Shelves designed to prevent spillage and mixing of Chemicals Stored to provide extra Safety.

- max load 40 Kg evenly distributed.

- Dual vents and raised leak-proof door sill.

- sump plugs for drainage and spilled liquid recovery.

- Fume Extraction Ventilation Kit.





# Flammable Cabinets

---



# Flammable Cabinets

---

100% Made in Italy, COO included.

Completely made of an electro-galvanized steel plate with a thickness from 1 to 1.5 mm, cold bent.

External finishing is made of acid proof epoxy resin and passage through a thermal tunnel at 200 °C.

Internal finishing panels made of HPL are highly resistant to chemical and aggressive vapors.

Automatic door closing when the ambient temperature exceeds 50 °C.

Shelves tested to fire.

30mm thermo-expanding isolation seals that in case of temperature rise ensure a perfect cabinet sealing, according to standard EN14470-1.

Air inlet and outlet with certified fire dampers closing ducts when the temperature is higher than 70 °C according to standard DIN 4102-6.

ISO 3864: Pictogram signaling.

Certified as resistant to fire for 90 minutes, according to standard EN14470-1 BV (Bureau Veritas).

Certified as complying with standard EN16121 BV (Bureau Veritas).

# Fume-Hood

---

**Our Fume-Hoods are with the highest safety standards and we have a professional team that will install, maintain and support your product.**



# Fume-Hood

The Fume Hood is a safety device designed to protect individuals from exposure to hazardous or toxic substances such as chemical fumes, gases, vapors, and dusts. They also provide protection from potentially harmful chemical reactions and spills that may occur during laboratory work.

The hood's ventilation system helps to contain and exhaust these substances, preventing them from spreading into the surrounding environment and minimizing the risk of inhalation or skin contact.

The exclusive employment of steel sheets makes also a flagship product on the market, since common fume cupboards are often manufactured with wooden or plastic parts, offering much lower performances when it comes to durability and resistance to chemicals or fire attacks.

Furthermore, epoxy powder coating grants full protection from the most aggressive chemicals and from corrosion.

Steel sheets ensure a completely incombustible structure, so that is rated as “class 0 “fire reaction.



# Fume-Hood

---

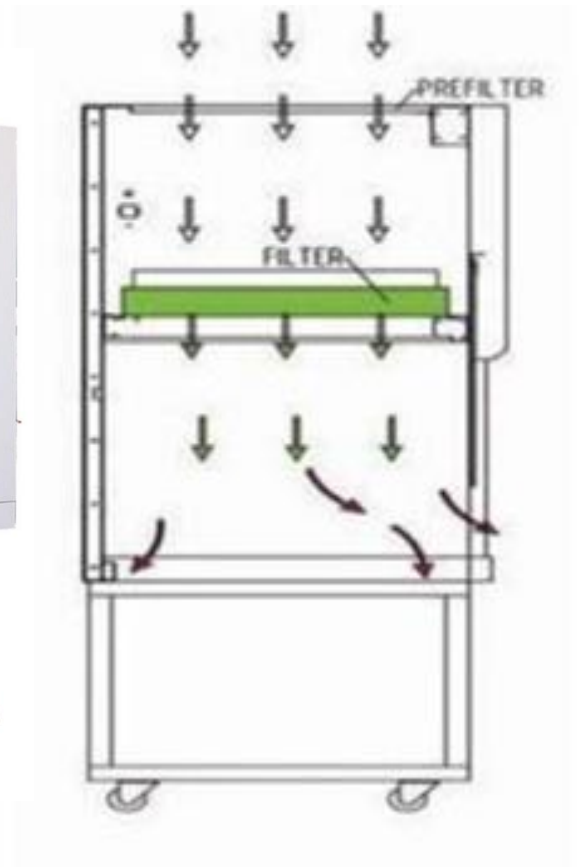
The aerodynamic design of a fume hood helps to control and direct the flow of air within the hood, ensuring that any harmful fumes, gases, or particles are effectively captured and removed.

This design helps to create a consistent and controlled airflow pattern, preventing the escape of contaminants into the laboratory or workspace.

Additionally, an aerodynamically designed fume hood can help to minimize turbulence and eddies within the hood, improving the overall efficiency of the ventilation system and ensuring the safety of the users within the **TLV** (Threshold limit value); which is the max level of chemical substances a worker can be exposed to day after day for a working lifetime without adverse effects.

# Laminar Flow

---



# Laminar Flow

---

The laminar flow clean bench is a work bench or similar enclosure which has its own filtered air supply.

It provides product protection by ensuring that the work in the bench is exposed only to HEPA-filtered air.

Laminar flow clean benches are widely used in medical research laboratories, hospitals, manufacturing facilities and other research and production environments.

We can offer both horizontal and vertical flow models for you.

**Vertical Laminar Flow Clean Bench** In vertical flow models, filtered air is passed through the main chamber of the cabinet in a vertical laminar (unidirectional) air stream before being exhausted through the front opening of the cabinet.

# Bio Safety Cabinet

---





# Bio Safety Cabinet

---

Class II type A2 Biological Safety Cabinets. is designed to provide a high degree of Personnel protection from harmful agents used inside the biosafety cabinet.

Product protection to avoid contamination of the work, experiment or process from outside contaminants. Environmental protection from contaminants contained within the biosafety cabinet.

- Two HEPA filter "H14" 0.3 um 99.995 %.
- 30% of the air is exhausted from the cabinet through HEPA filter while 70% is recirculated.
- Inner casing from stainless steel 304.
- The outer casing is made of sheet steel spraying adopts electrostatic spray techniques.
- Speed controls up to 0.45 m/s with blower switch.
- LED lamp on / off and UV lamp on / off and timer.
- Total using counter.
- Low noise blower
- Electrical door tempera safety glass 5mm thick with safety lock.

# Arm Hood

---



# Arm Hood

---

Arm Hoods local extractor with friction joints designed for use in workplaces where great flexibility is required e.g. laboratories and production environments in lighter industrial applications.

Simple, easy function

The friction joints have a large frictional diameter and are supported with ball bearings.

The degree of friction is easily adjusted with a one-hand knob.

Adapted support springs balance out the weight of the arm.

All arms are equipped with a 360 degree rotational swivel mounted in place.

An air tight damper is fitted as standard.

Always easy to select the right product Available in two versions:

- Standard version.

Suitable for evacuation of most types of airborne contaminants.

- PP version.

Most suitable for evacuation of highly corrosive contaminant in high concentrations.

# Accessories

---

Electric Fixture

Gas Taps

Air Taps

Water Faucet

Eyewash & shower

Peg Board

# Electric Fixture

---



# Electric Fixture

---

All electric fixtures shall be specifically tailored for laboratory purposes and according to international and local standards.

All sockets shall be 220 V, 50 HZ, and have a minimum of 16A unless otherwise requested.

All sockets shall be fixed to the bench tops away from sinks.



# Gas Taps

---



# Gas Taps

Gas outlets are of the finest imported laboratory types (Spanish industry) with European DIN certification ISO9001 EN 13792

DINL2898andDINI2918.1—2-3

.German DIN DVGW Australian WATERMARK and AGA.DIN-EN13792).

Handles or any parts in contact with water are not made of plastic materials, provided that the outlets are with a graduated drawn end that allows the installation of various sizes of hoses and is securely fastened to the bench pin to ensure that no liquids leak under the bench.

Gas outlets of the type that do not open automatically are secured against any faults.





# Gas Taps

---

Valve Body: Forged brass with polished chrome-plated finish.

Valve Unit: Quarter-turn open/close with chrome plated brass ball and molded TFE seals.

Handle: Chrome-plated forged brass lever handle with color-coded index disc.

Inlet: Furnished with 3/8" IPS mounting shank, (assembled), locknut and washer. 3/8" NPT male inlet.

Outlet: Integral (no removable) ten serration hose end.

Quality Assurance: The Fixture is fully assembled and factory tested prior to shipment.

## **Additional Models:**

L4100-132A-WSA same as above except with two valves at 90 degrees.

L4100-132S-WSA same as above except with two valves at 180 degrees.

L4100-134-WSA same as above except with four valves.

# Air Taps

---



# Air Taps

---

These valves have a Teflon washer with an exchangeable stainless steel seat, with a screw pitch of 0.75 mm. through which the flow rate can be finely regulated.



# Water Faucet

---



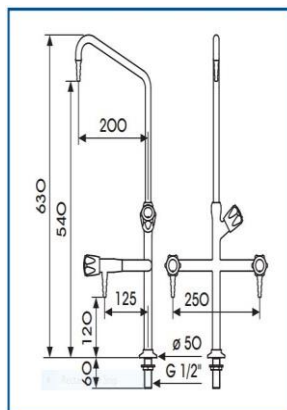
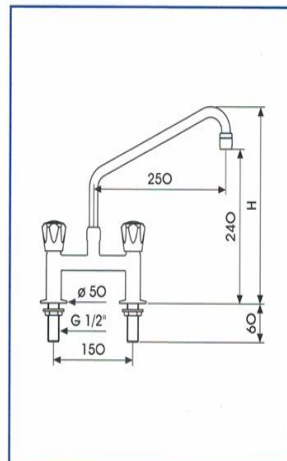
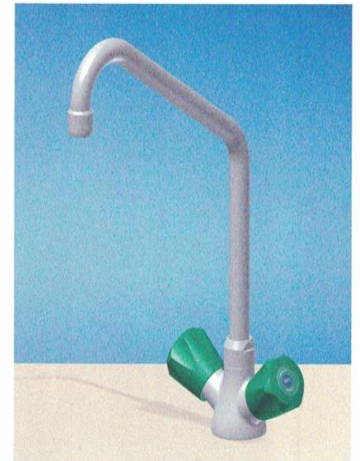
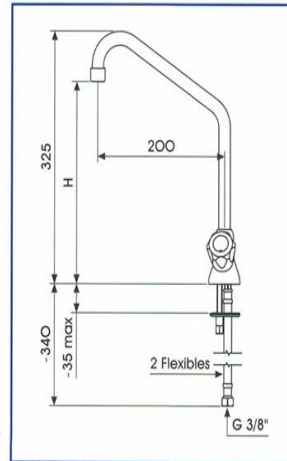
# Water Faucet

HOFFEN Laboratory Fitting  
Comprise a wide variety of Quality laboratory fixtures and fittings that aired in today's specialized labs.

Our water systems products are produced in ISO-9001:2000 facility in Malaysia and have been used in the most advanced R&D and institutional learning environments around the world.

The entire product lines are produced to excellent standards, and are made of high-quality all brass bodies, ABS handle and a polypropylene Outlet nozzle.

The solid brass pressings are machined to close tolerances to ensure the highest product quality, and epoxy powder is coated for pressings are machined to close tolerances to ensure the highest product quality, epoxy power coated for prevention of corrosion in wet laboratory applications and easy maintenance.



# Water Faucet

---

The redesigned faucet bodies are produced in a variety of configurations with streamlined and enhanced styling.

Fittings from HOFFEN are available with a fixed removable nozzle in accordance with DIN and US standards.

HOFFEN Laboratory Fittings are tested and certified by PSB and SIRIM QAS in compliance with British Standards BS5412:1996

HOFFEN Laboratory Fittings utilizes the highest quality materials available.

Primary brass and nickel stainless steel are used as required.

When required, only the safest adhesive and silicone based lubricant are used.

All Fittings surfaces are powder coated with chemical-resistant epoxy resin.

# Emergency Eyewash & Shower

---



# Emergency Eyewash & Shower

---

An emergency eyewash & shower unit of the type designated for the use of laboratories of the finest types and produced by specialized companies (industry Spanish) holds the European DIN ISO 9001, EN15154, DIN 1289, ANSI / SEA Z358, APPLUS Certified.

The unit is assembled in one unit and is of European manufacture (Spanish) and holds a certificate.

The unit is made of galvanized steel with a polyamide anti-corrosion plastic coating with a thickness ranging from 250 to 300 microns.





# Peg Board

---



# Peg Board

---

Poly Pegboards are supplied with oval polypropylene pegs angled for effective support and drainage of lab glassware.

As an option, 2" [51mm] wide stainless steel drip trays are available for most pegboard sizes.

PVC tubing is included.



# Our Clients

## UNIVERSITIES



# Our Clients

## PETROLUUM COMPANIES



**Weatherford®**

**GAPCO**



**Schlumberger**



human energy®



دانة غاز  
**DANA GAS**



**IETOS**  
*Customized Water Solutions*



# Our Clients

## HOSPITALS & LABORATORIES



مستشفى دار الشفاء  
DAR ALSHEFA  
HOSPITAL  
اسم له دلالة



**BHEYA**  
Baheya foundation for early detection  
& treatment of breast cancer



# Our Clients

## PHARMACEUTICAL COMPANIES



**October**  
Pharma



**Al Andalous**  
MEDICAL COMPANY



AMOUN PHARMACEUTICAL CO. S.A.E.





# Our Clients

## CHEMICALS COMPANIES



# Our Clients

---

## DETERGENT COMPANIES



**H.B. Fuller**

Connecting what matters.™





# Our Clients

## FOOD & BEVERAGE COMPANIES



# Our Clients

## CONTRACTING COMPANIES



# Hoffen

## Contact Us

 [hoffen@hoffenegypt.com](mailto:hoffen@hoffenegypt.com)

 01221810006

 (+2)02 33030634 - 01159066855 - 01103905495

 12 Elkhartoom-street, El-Mohandessin, Giza

 [linkedin.com/company/Hoffen-Egypt/](https://www.linkedin.com/company/Hoffen-Egypt/)

